

[www.cobmac.com](http://www.cobmac.com)

**MACHINE IS OUR JOB**



CONCRETE BLOCK, INTERLOCK,  
INSULATED BLOCKS, CURBSTONE AND  
SPECIAL BLOCK MACHINES  
AND FACTORY MANUFACTURING.

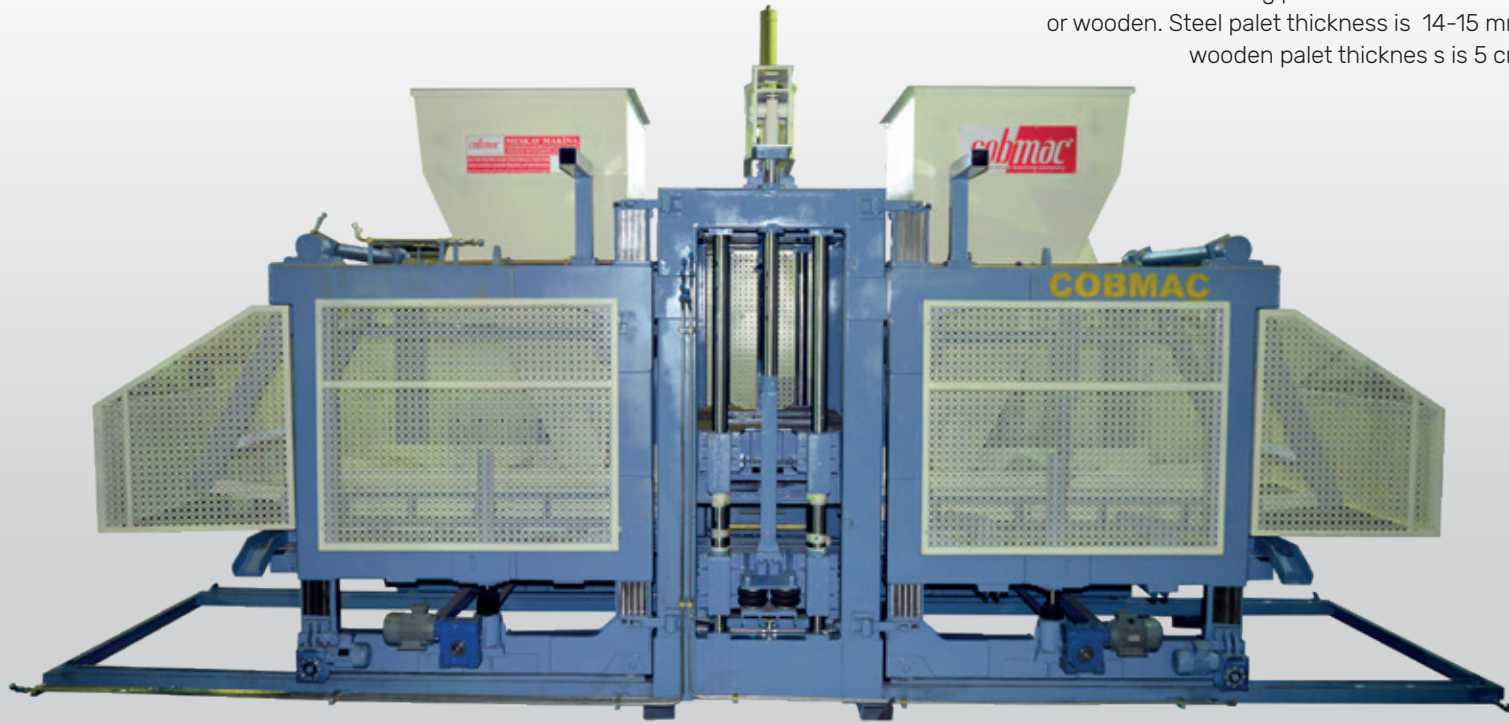
***cobmac***<sup>®</sup>  
concrete block machine company

## COB1842

### FULLY AUTOMATED BLOCK and INTERLOCK FACTORY

2750-3000 Blocks / Per Hour  
180-200 Sqm. Interlock / Per Hour

This machine was designed for fully automated factory. It can work with finger, elevator and curing chamber. It has 16-20 second cycle time. Manufacturing pallet can be used steel or wooden. Steel pallet thickness is 14-15 mm, wooden pallet thickness is 5 cm.



## COB1236

### FULL AUTOMATIC BLOCK and INTERLOCK FACTORY

2000-2250 Blocks / Per Hour  
150-170 Sqm. Interlock / Per Hour

This machine was designed for full automatic factory. It can work with finger, elevator and curing chambers or with stacking robot and forklift transport for fresh and dry product. It has 18-20 second cycle time. Manufacturing pallet can be used steel or wooden. Steel thickness is 14-15 mm, wooden thickness is 5 cm.



TECHNICAL SPECIFICATIONS	COB 1842
Operation	Automatic
Machine Size (WxHxL)	2,5x4,5x8,2m
Machine Weight	25 tons
Pallet Size	140x130x5 cm
Machine Cycle Time	Min. 16 second, Max. 20 second
Vibrations Bottom	4x7,5 kw x 3.000 rpm (120 KN)
Vibrations Upper Mould	2x3 kw x 3.000 rpm (36 KN)
Required Batching EQ	2 CBM Mixer + 0,5 CBM Color Mixer
Capacity	2.750-3.000 Blocks/per hour, 175 sqm per hour
Products Height	Min 5 cm - Max. 40 cm
Productions Are	130x130 cm
Capacity Per Press	18 Blocks for 20x40x20 cm, 42 pcs Interlocks, 90 pcs Solid Bricks 6x12x25 cm



18 pieces per drop 20x40x20 cm blocks



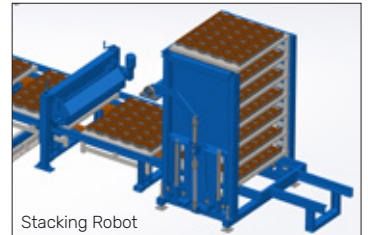
Power Unit

TECHNICAL SPECIFICATIONS	COB 1236
Operation	Automatic
Machine Size (WxHxL)	2,5x4,5x8 m
Machine Weight	24 tons
Pallet Size	145x115x5 cm
Machine Cycle Time	Min. 16 second, Max. 20 second
Vibrations Bottom	4x5,5 kw x 3.000 rpm (96 KN)
Vibrations Upper Mould	2x5,5 kw x 3.000 rpm
Required Batching EQ	2 CBM Mixer + 0,35 CBM Color Mixer
Capacity	2000-2250 Blocks/per hour, 140-160 sqm per hour
Products Height	Min 5 cm - Max. 40 cm
Productions Are	130x110 cm
Capacity Per Press	12-15 Blocks for 20x40x20 cm, 36 pcs Interlocks, 72 pcs Solid Bricks, 6x12x25 cm



Control Board

Power Board

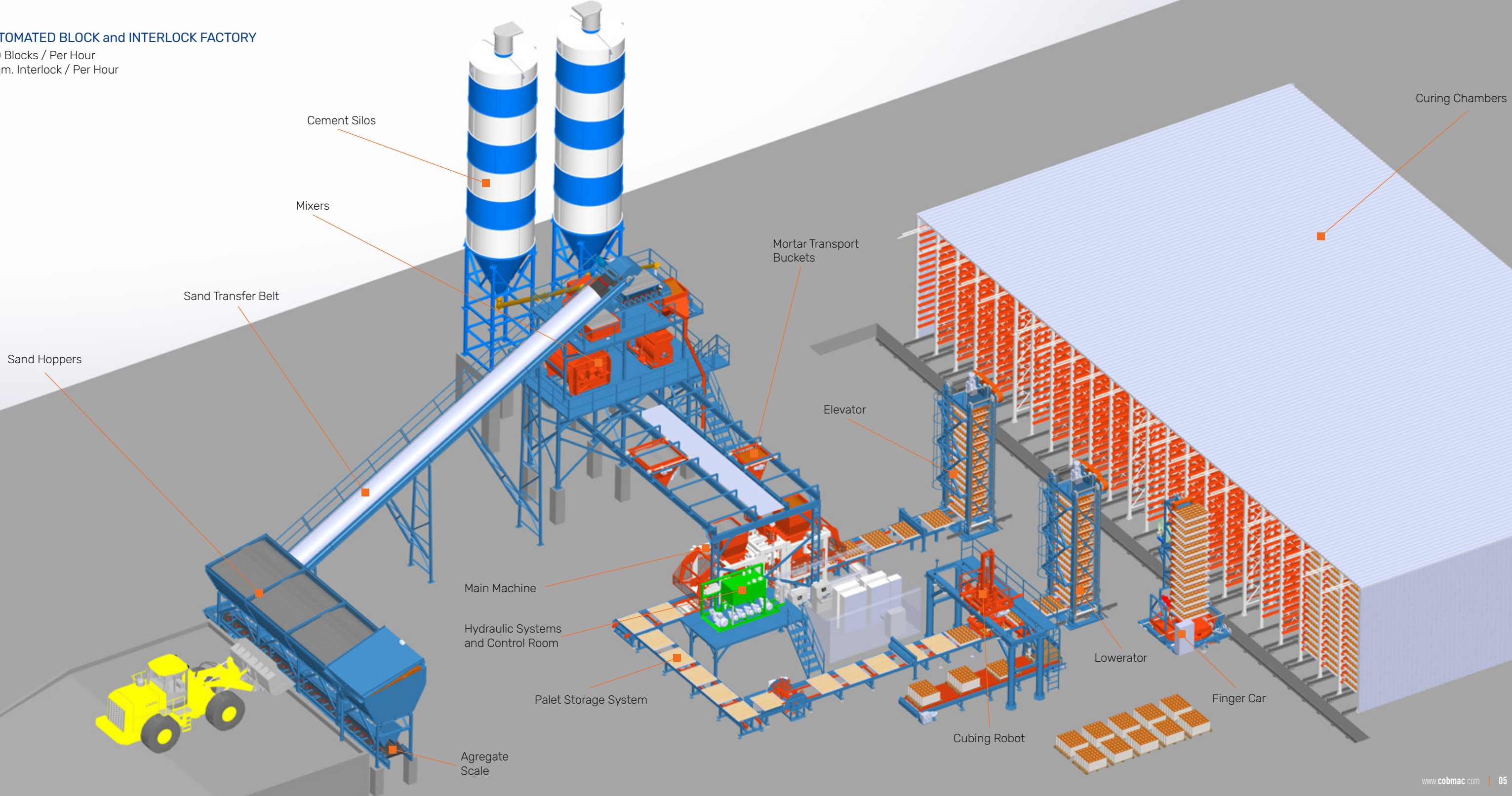


Stacking Robot

Steel Pallet 145x115x5 cm with legs

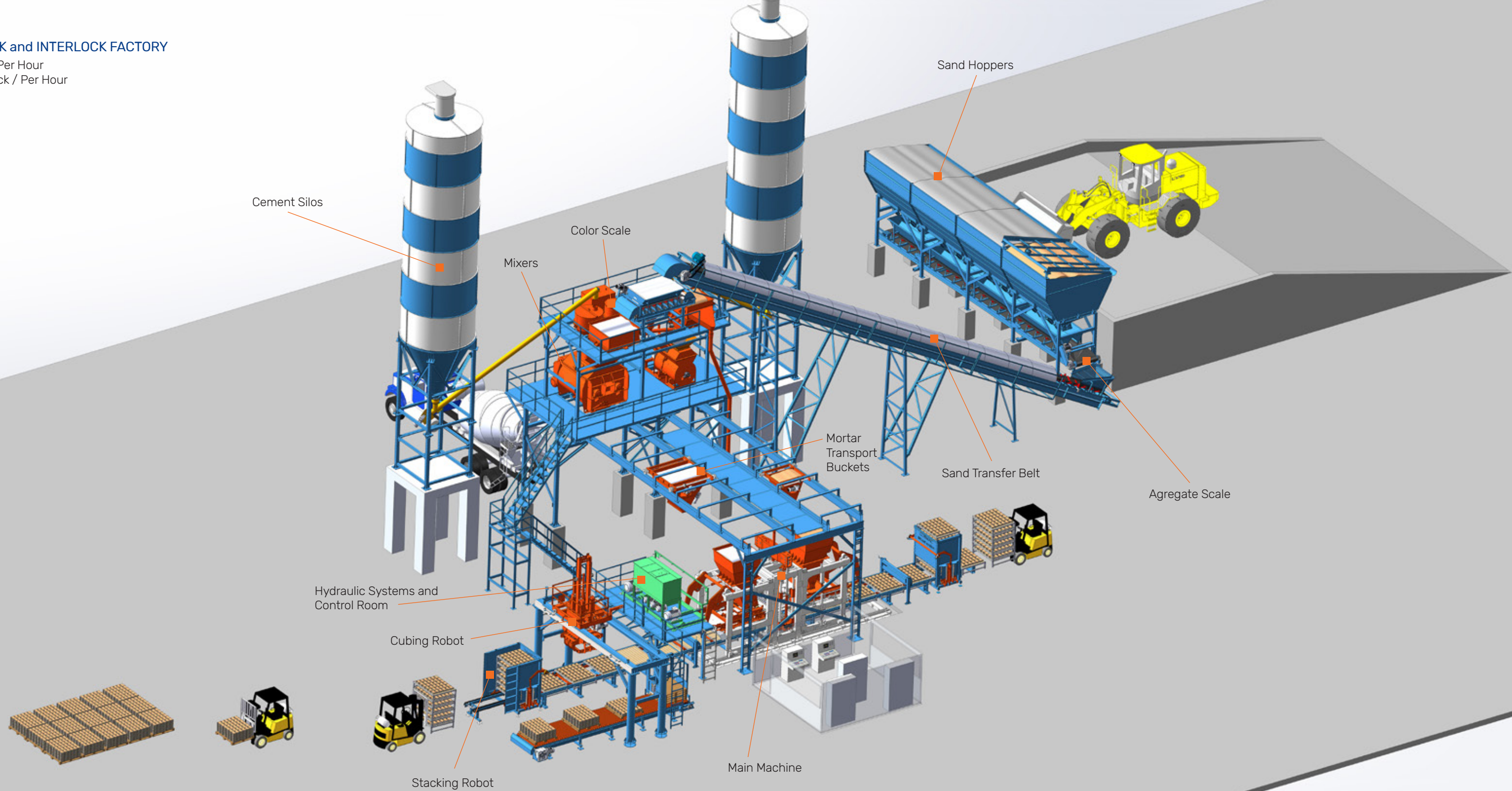
FULLY AUTOMATED BLOCK and INTERLOCK FACTORY

2000-3000 Blocks / Per Hour  
160-200 Sqm. Interlock / Per Hour



**AUTOMATED BLOCK and INTERLOCK FACTORY**

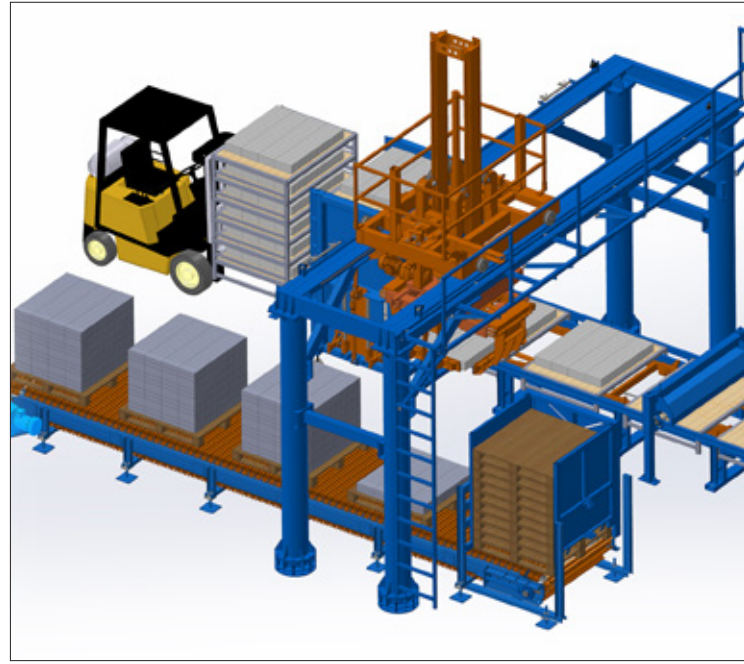
2000-3000 Blocks / Per Hour  
160-200 Sqm. Interlock / Per Hour



## ELEVATORS and LOWERATORS



## CUBING ROBOT



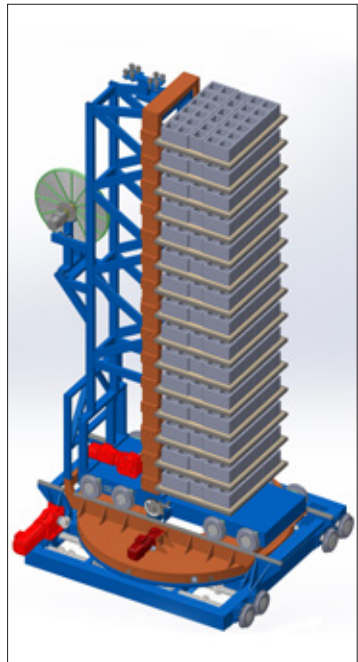
## BATCHIN PLANTS



## SAND SILOS and AGREGATE SCALE



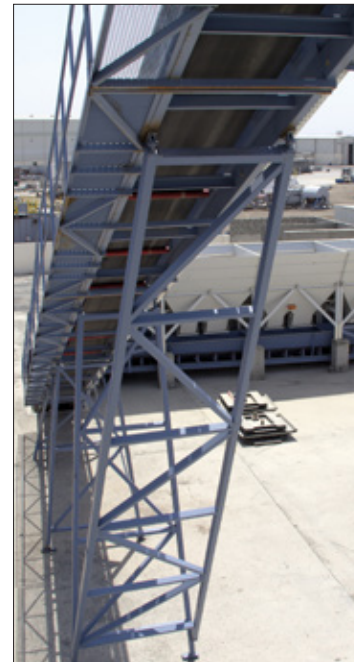
## FINGER CAR



## CURING CHAMBERS



## SAND BELT



## MORTAR TRANSPORT SYSTEM



## HYDRAULIC UNIT



## COB1230 / COB1025

### AUTOMATIC or SEMI-AUTO BLOCK and INTERLOCK FACTORY

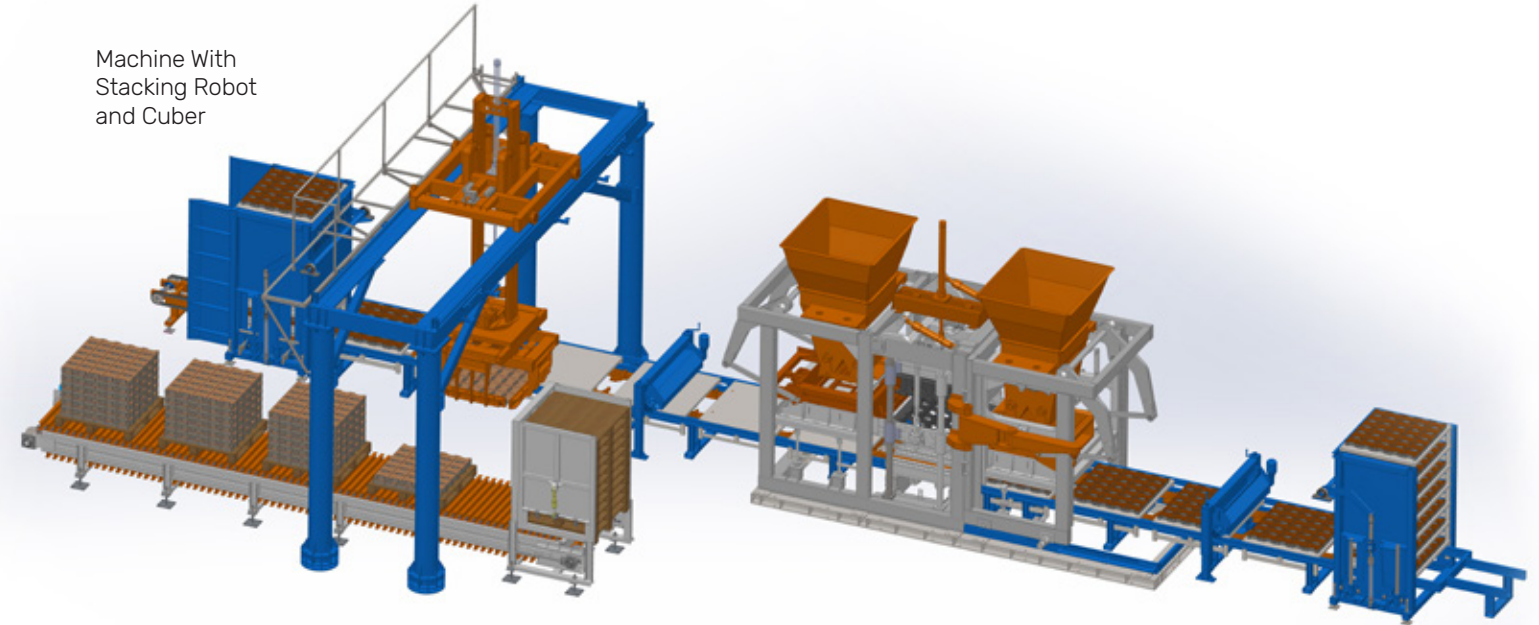
1300-1500 Blocks / Per Hour  
100-120 Sqm. Interlock / Per Hour



This machine is designed interlocks, blocks, insulated blocks, curbtones. It can produce 30 pcs interlocks, 12.5 pcs block for 20x40x20 cm, 3 or 5-6 curbtones in a press. Cycle time is 18 to 22 second. It is automatic and semi automatic. Machine can be use with stacking system or without stacking system. It has 6 vibrators, 4 pcs is under of the mould, 2 pcs is upper of the mould. Stacked pallet must be transport with forklift for machines with stacking system. Machine can be press on the wooden pallet. Wooden pallet is made by pine with covered steel. There are two type of mortar system. It is manual and automatic weighing system.



Machine With Stacking Robot

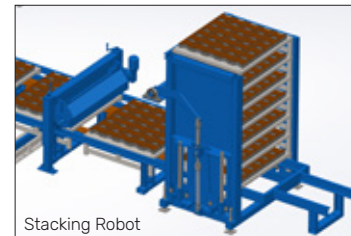


Machine With Stacking Robot and Cuber

TECHNICAL SPECIFICATIONS	COB 1230/COB 1025
Operation	Automatic
Machine Size (WxHxL)	2,5x3,5x8 m
Machine Weight	12 tons
Pallet Size	125x110x4.5 cm / 125x98x4.5 cm
Machine Cycle Time	Min. 18 second, Max. 22 second
Vibrations Bottom	4x5.5 kw x 3.000 rpm (64 KN)
Upper Mould	2x3 kw x 3.000 rpm
Required Batching EQ	1 CBM Mixer + 0,35 CBM Color Mixer
Capacity	1300-1500 Blocks/per hour, 100-120 sqm per hour
Products Height	Min 5 cm - Max. 30 cm
Productions Are	110x110 cm
Capacity Per Press	10-12 Blocks for 20x40x20 cm, 25-30 pcs Interlocks, 64 pcs Solid Bricks, 6x12x25 cm



Control Board



Stacking Robot



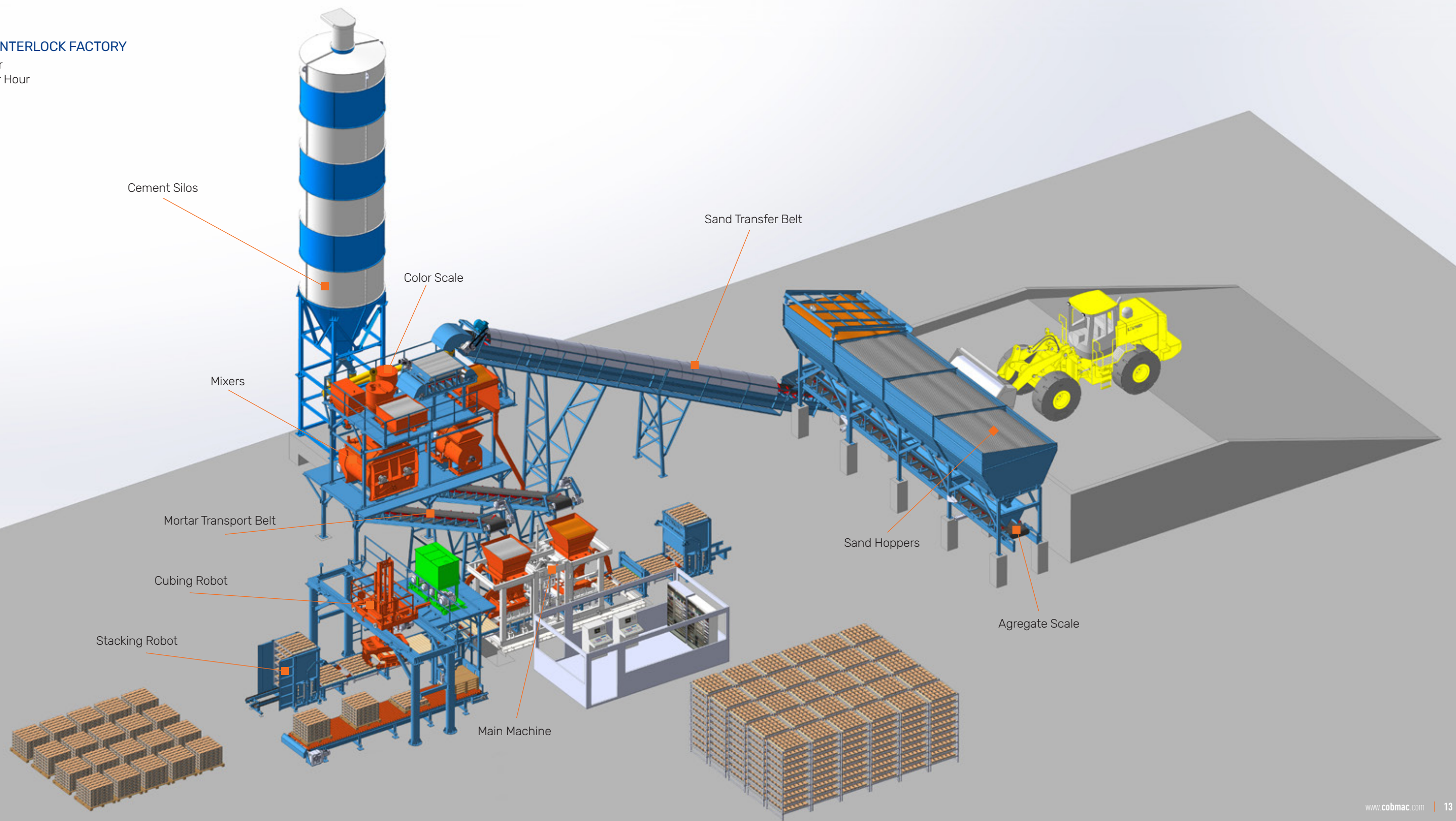
Power Board



Steel Palet 120x110x4 cm with legs

**AUTOMATIC BLOCK and INTERLOCK FACTORY**

1300-1500 Blocks / Per Hour  
100-120 Sqm. Interlock / Per Hour



## COB618

### AUTOMATIC AND SEMI AUTOMATIC BLOCK and INTERLOCK FACTORY

900-1200 Blocks / Per Hour  
75 Sqm. Interlock / Per Hour

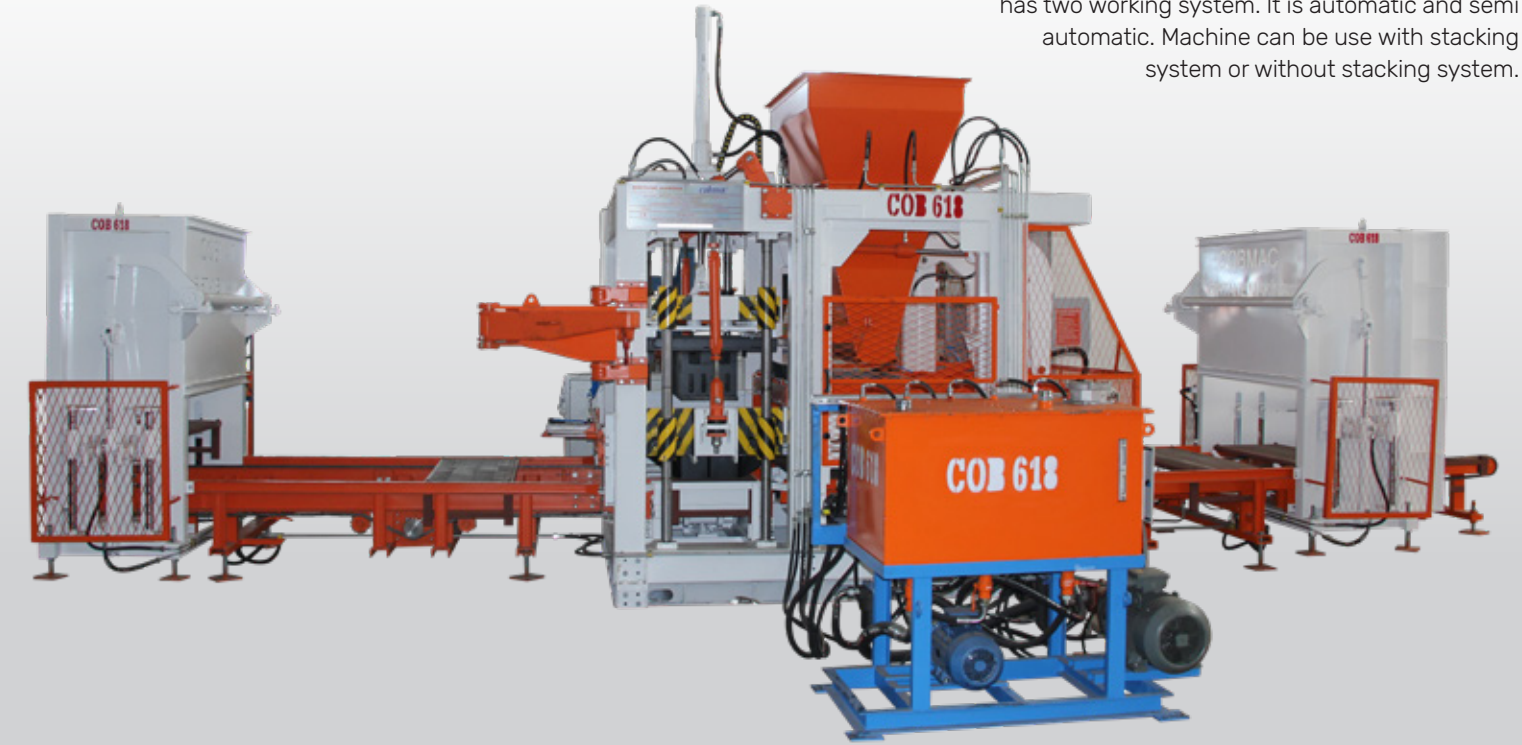


This machine is designed interlocks, blocks, insulated blocks, curbtone. It can produce 18 pcs interlocks, 6 pcs block for 20x40x20 cm, 3 curbtone in a press. A press time is 18 to 22 second. It has two working system. It is automatic and semi automatic. Machine can be use with stacking system or without stacking system.

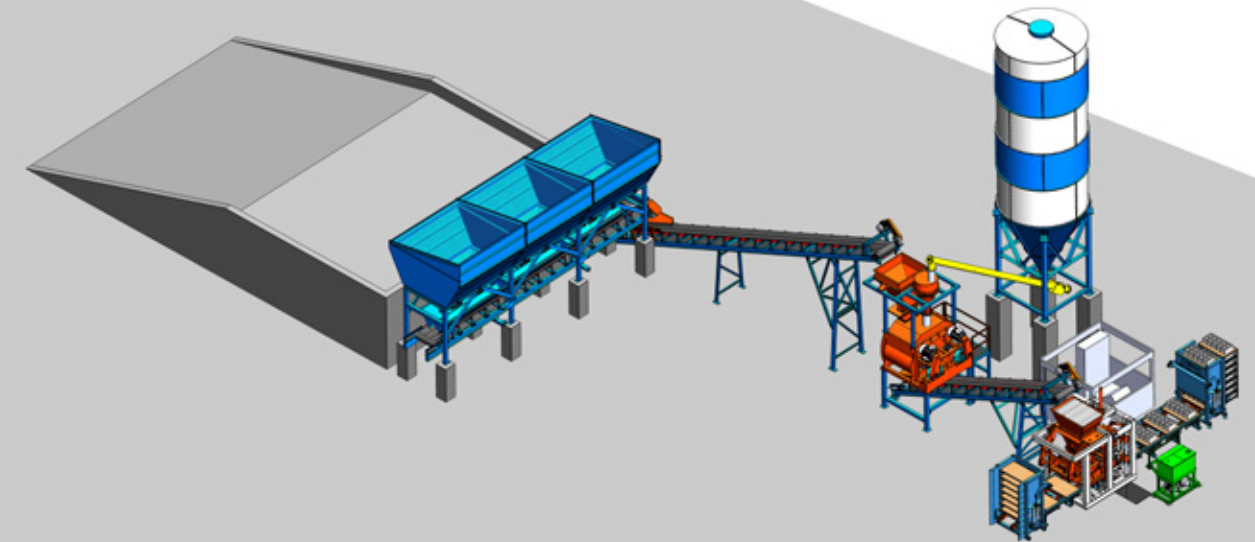
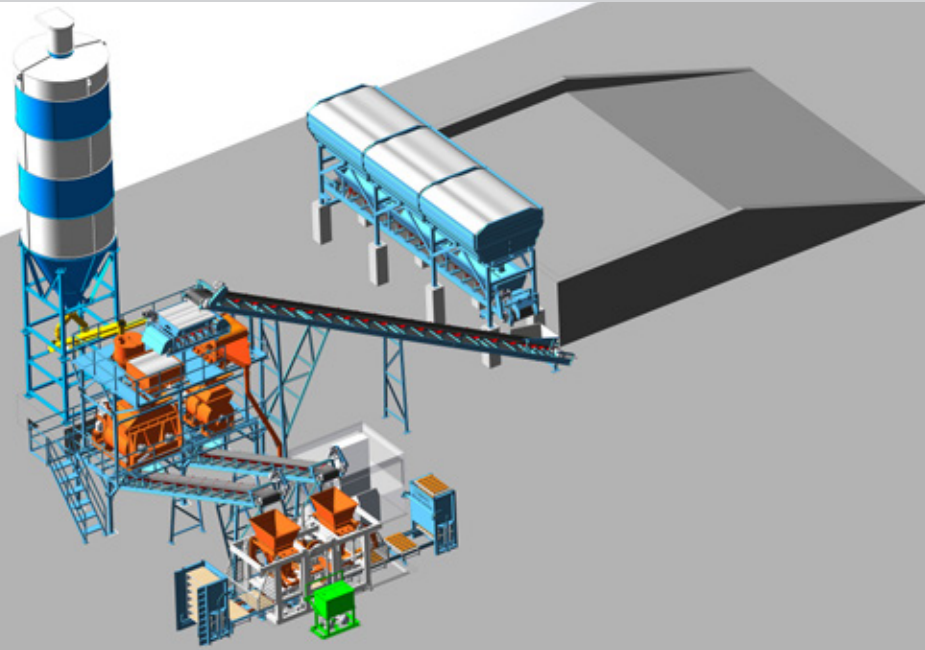
## COB618

### AUTOMATIC AND SEMI AUTOMATIC BLOCK FACTORY

900-1200 Blocks / Per Hour



This machine is designed blocks and insulated blocks. It can produce 6 pcs or 9 pcs block for 20x40x20 cm. A press time is 18 to 22 second. It has two working system. It is automatic and semi automatic. Machine can be use with stacking system or without stacking system.





## COB518

### AUTOMATIC AND SEMI AUTOMATIC BLOCK FACTORY

500-600 Blocks / Per Hour  
50 Sqm. Interlock / Per Hour

This machine is designed interlocks, blocks, insulated blocks, curbtones. It can produce 18 pcs interlocks, 5 pcs block for 20x40x20 cm, 2 or 3 curbtones in a press. A press time is 25 to 35 second. It has two working system. It is automatic and semi automatic. Machine can be use with stacking system or without stacking system.



## COB412

### AUTOMATIC AND SEMI AUTOMATIC BLOCK FACTORY

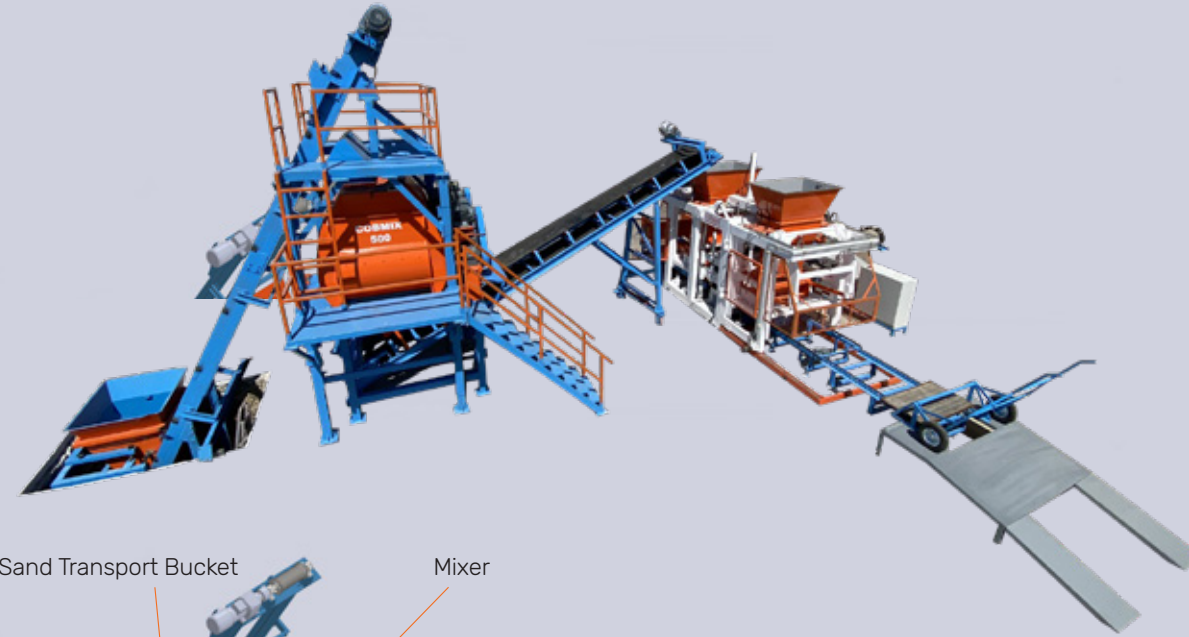
400-500 Blocks / Per Hour  
40 Sqm. Interlock / Per Hour

This machine is designed interlocks, blocks, insulated blocks, curbtones. It can produce 12 pcs interlocks, 4 pcs block for 20x40x20 cm, 2 or 3 curbtones in a press. A press time is 25 to 35 second. It has two working system. It is automatic and semi automatic. Machine can be use with stacking system or without stacking system.



### SEMI BLOCK and INTERLOCK FACTORY

300-400-500 Blocks / Per Hour



Sand Transport Bucket

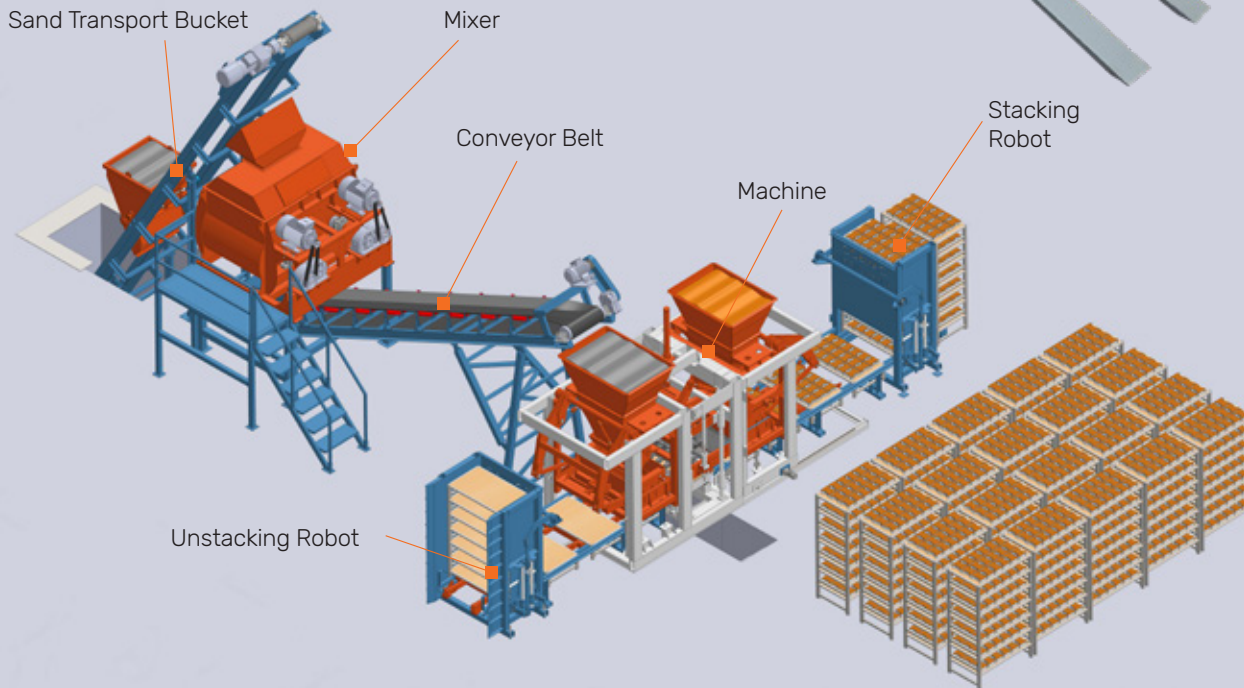
Mixer

Conveyor Belt

Stacking Robot

Machine

Unstacking Robot

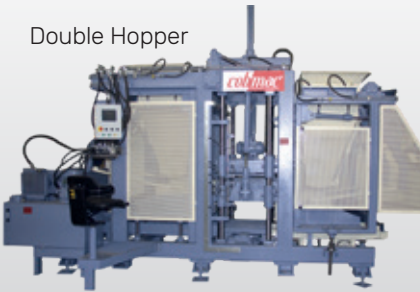


## COB39

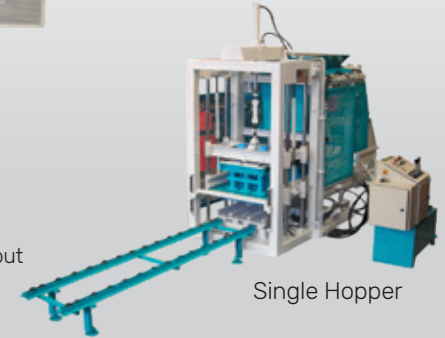
### SEMI AUTOMATIC INTERLOCK and MAKING MACHINE

300-350 Blocks / Per Hour  
30 Sqm. Interlock / Per Hour

This machine designed for manual machine user and only block manufacturer. Machine can be double hopper for interlock and curbstone manufacturing.



Double Hopper



Single Hopper

System : Semi automatic manual operation or PLC operation  
Mould : 9 pcs Interlocks, 3 pcs Blocks for 20X40X20 With Stacking System or Without  
Vibrators : Bottom: 2 x 4KW x 3000RPM  
Upper : 2X0.37 KW 450 KGS / RPM

## COB26

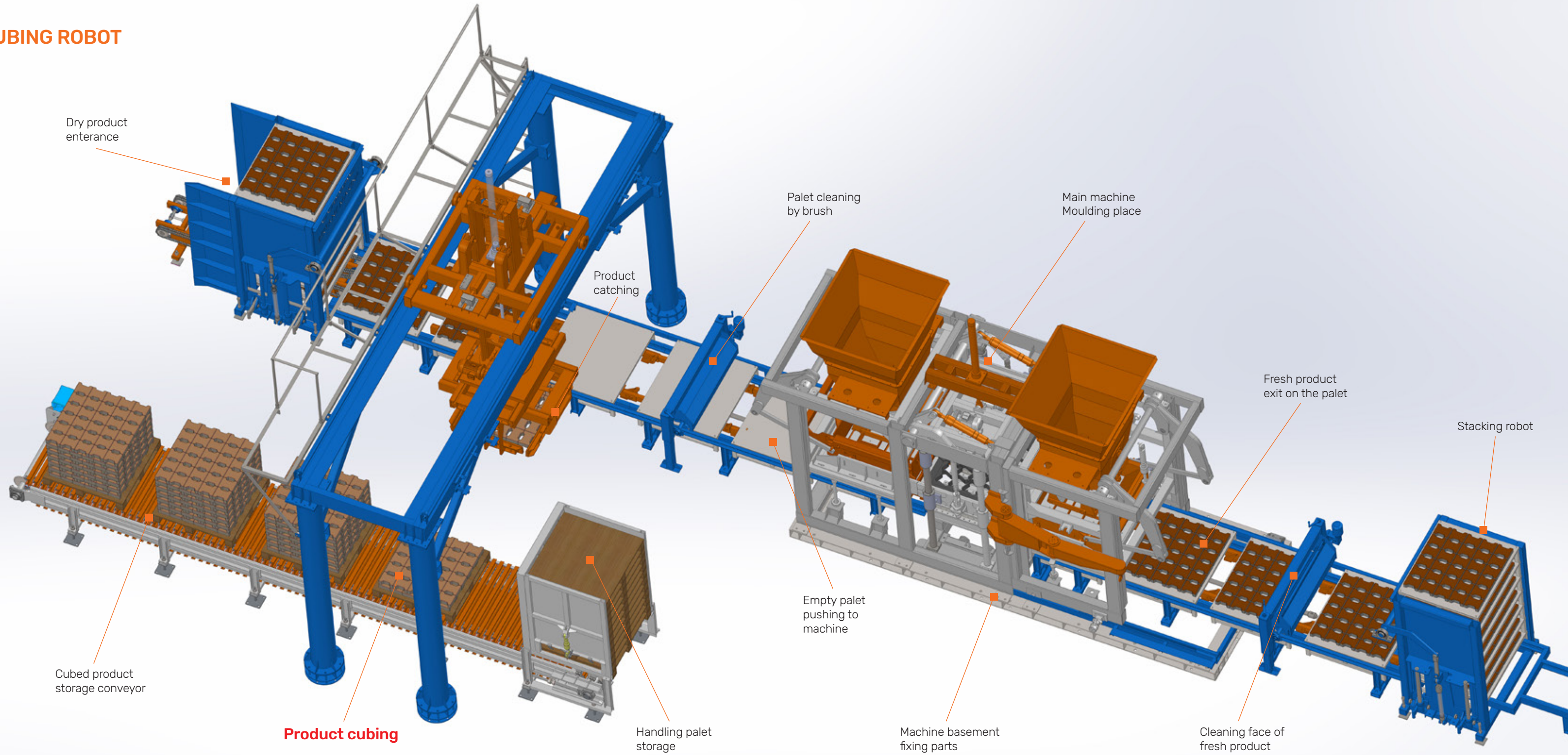
### BLOCK and INTERLOCK MACHINE

100-150 Blocks / Per Hour  
15 Sqm. Interlock / Per Hour

- This small block macking machine
- It can work on the wooden pallet
- All moving by hydraulic
- There is one set vibrations
- Machine has one hopper, you can not produce double layer interlock. Only one layer interlock
- Vibration motor power 3 kw and 3.000 rpm and 0.37 kw x3000 rpm
- Hydraulic motor and pump 3 kw and 11 cc. Motor Gamak brand name in Turkey
- You can produce height is between 6 to 20 cm block and interlock
- Required two labours
- Apprx. 500 cycle in 8 hours
- It can produce 2 blocks 20x40x20 cm or 6 interlock in one cycle
- Box is 1.5x1.5x2m weight:1.550 kgs
- Electrical pannel included, ready for start
- Total electric power 4 kw/h, 15 or 20 kw generator in enough



# CUBING ROBOT



Dry product entrance

Product catching

Palet cleaning by brush

Main machine Moulding place

Fresh product exit on the palet

Stacking robot

Cubed product storage conveyor

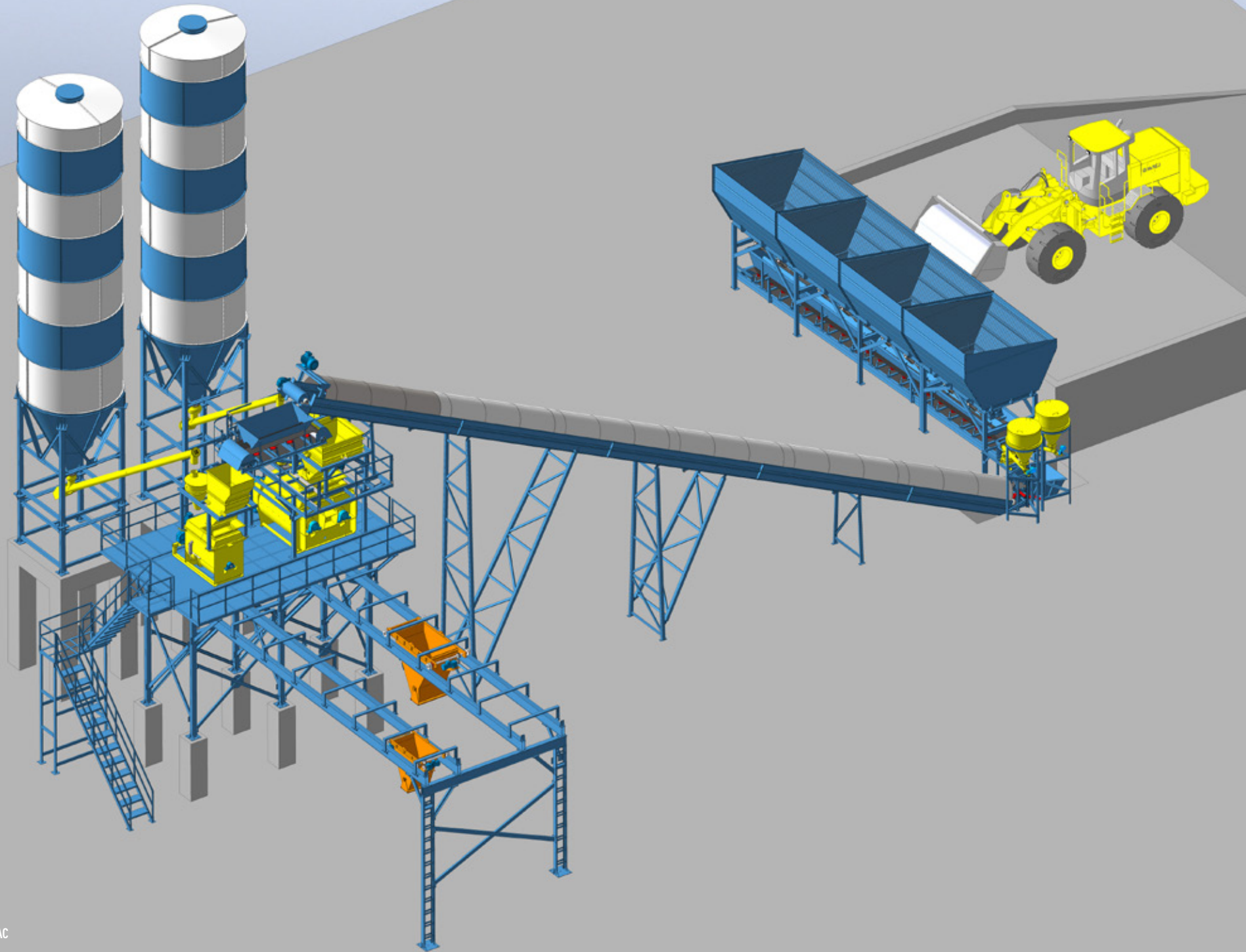
**Product cubing**

Handling palet storage

Empty palet pushing to machine

Machine basement fixing parts

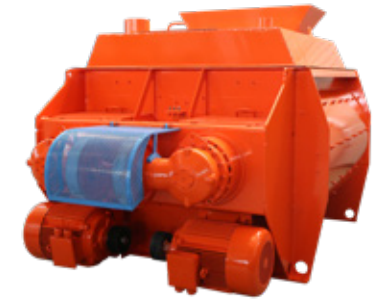
Cleaning face of fresh product



**COBMIX 2000**

**TWIN SHAFT MIXER**

- Mixing capacity: 2 m<sup>3</sup>
- Motor power 2x37 kw
- Gearbox. Brevini/Rossi type
- Main body 10 mm
- Inside corroded body 15 mm Hardox steel.
- Hydraulic cover opening.
- Cement weighing and water scaling.
- Cement weighing silo capacity is 500 kg.



**COBMIX 1000**

**TWIN SHAFT MORTAR MIXER**

- Mixing capacity: 1 m<sup>3</sup>
- Motor power 2x22 kw
- Gearbox. Helix type output: 26.500 N
- Main body 10 mm
- Inside corroded body 15 mm st52 steel.
- Pneumatic cover opening.
- Cement weighing and water scaling.
- Requirement air compressor is min 600 Lt.
- Cement weighing silo capacity is 400 kg.



**TWIN SHAFT MIXERS**

- COBMIX 2000
- COBMIX 1000
- COBMIX 750
- COBMIX 500



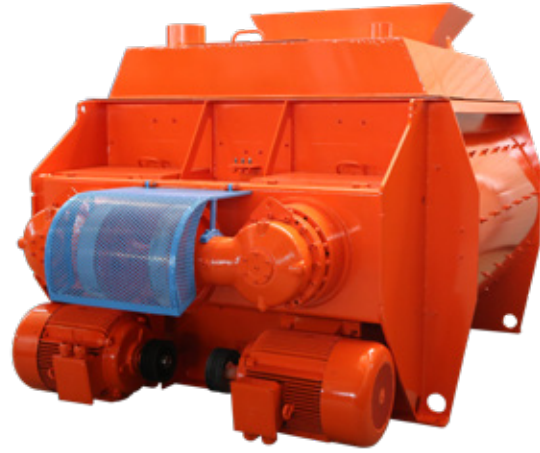
**PLANETRY MIXERS**

- COBMIX 3000/2000
- COBMIX 2250/1500
- COBMIX 1500/1000
- COBMIX 1000/750
- COBMIX 1000/750
- COBMIX 750/500
- COBMIX 500/330



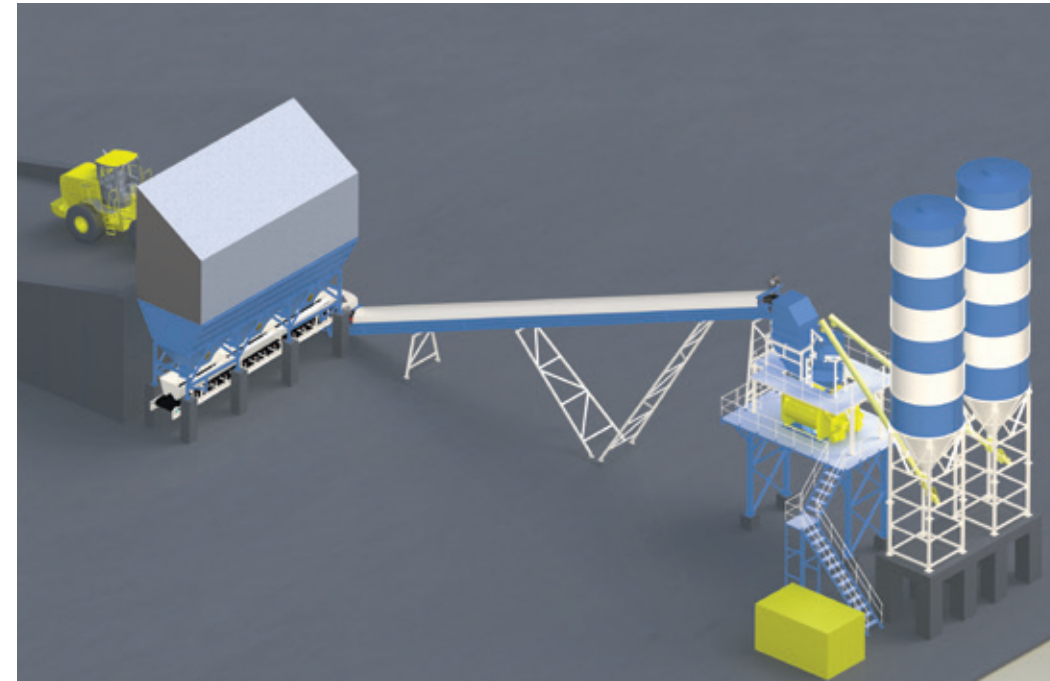
# COBATCH 120 CONCRETE BATCHING PLANT

- 60 CBM BATCHIN PLANT
- 90 CBM BATCHIN PLANT
- 120 CBM BATCHIN PLANT
- 150 CBM BATCHIN PLANT
- 180 CBM BATCHIN PLANT



## COBMIX 2000 TWIN SHAFT MIXER

- Mixing capacity: 2 m<sup>3</sup>
- Motor power 2x37 kw
- Gearbox. Brevini/Rossi type
- Main body 10 mm
- Inside corroded body 15 mm Hardox steel.
- Hydraulic cover opening.
- Cement weighing and water scaling.
- Cement weighing silo capacity is 500 kg.



## CONCRETE BATCHING PLANT TECHNICAL SPECIFICATION

CAPACITY OF BATCHING PLANT	
Concrete Capacity Per Hour (m <sup>3</sup> /h)	120

MIXER SPECIFICATION	
Mixer Mixing Capacity (m <sup>3</sup> /h)	2 m <sup>3</sup>
Motor Power (Kw)	2x37
Mixer Type	Twin Shaft

AGREGATE HOPPER	
Bin Quantity	3-Nis
Bin Capacity	20 m <sup>3</sup>
Total Capacity	60/80 m <sup>3</sup>

AGREGATE WEGHING BELT	
Weight (M)	1.000
Lenght (M)	11.200
Motor Power (Kw)	7.5

SAND TRANSPORT BELT	
Weight (M)	800
Lenght (M)	26.800
Motor Power (Kw)	18.5

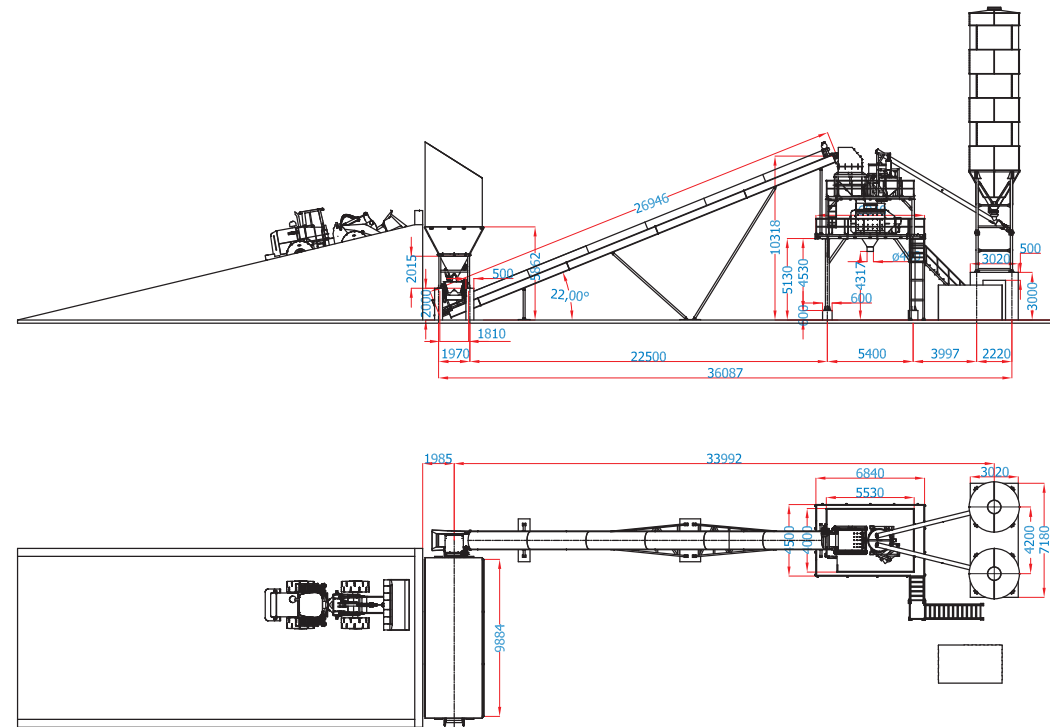
WEGHING CAPACITY	
Agreegate Weghing Capacity (Kg)	2.500
Cement Weghing Capacity (Kg)	2.000
Water Scale Capacity (Kg)	500
Additive Scale Capacity (Kg)	50

SCREW CONVEYOR	
Screw Diameter (mm)	273
Lenght (mm)	9.000
Motor Power (Kw)	11

CEMENT SILO	
Capacity (Ton)	100
Quantity	2

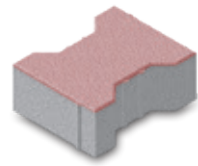
COMPRESSOR	
Capacity (Lt)	500
Working Pressure (Bar)	8
Motor Power (Kw)	5.5

WATER PUMP	
Capacity (m <sup>3</sup> /h)	2.4
Motor Power (Kw)	0.37



# PRODUCTS

## PAVERS



CBC-i-8



CBC-c-10



CBC-r-6

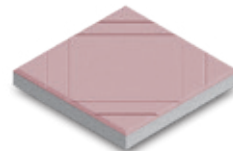


CBC-d-6

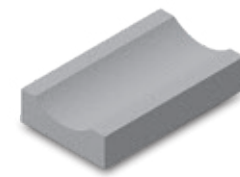
COB 1230 Capacity is 650 sqm/per/8 hour  
 COB 412 Capacity is 250 sqm/per/8 hour



CBC-h-20



CBC-p-40x40

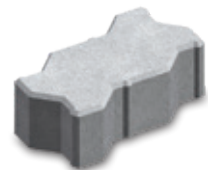


CBC-y-26x40

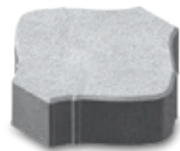


CBC-g-40x60

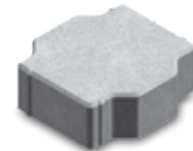
COB 39 Capacity is 200 sqm/per/8 hour  
 COB 26 Capacity is 100 sqm/per/8 hour



CBC-z-8



CBC-e-8

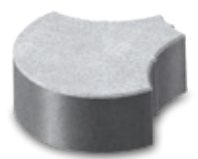


CBC-oi-8

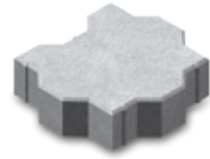


CBC-t-8

## CURBSTONE



CBC-m-8



CBC-a-8



CBC-18x30x70



CBC-15x30x50

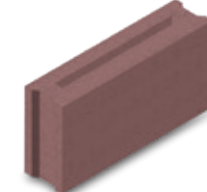
# PRODUCTS

## 10x40x20 cm BLOCKS

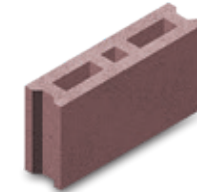
2.000 / 5.000 / 12.000 / 17.000 / 30.000 pcs/8 hour



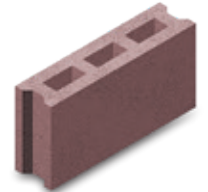
CBC-10s



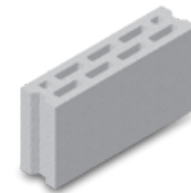
CBC-s-10



CBC-10-1-3a



CBC-10-1-3



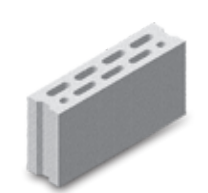
CBC-10-2-9



CBC-10-1-4



CBC-10-4-1



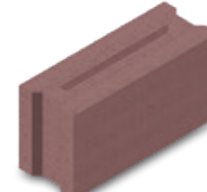
CBC-10

## 15x40x20 cm BLOCKS

1.500 / 3.500 / 10.000 / 12.000 / 24.000 pcs/8 hour



CBC-15s



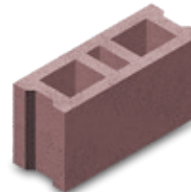
CBC-s-15



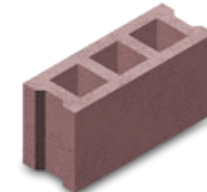
CBC-ins-15



CBC-15-2-5



CBC-15-1-3a



CBC-15-1-3



CBC-12s



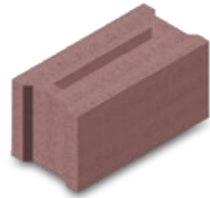
CBC-20

# PRODUCTS

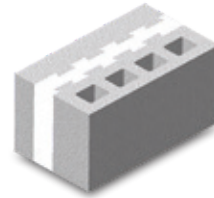
## 20x40x20 cm BLOCKS 1.000 / 3.200 / 8.000 / 10.000 / 20.000 pcs/8 hour



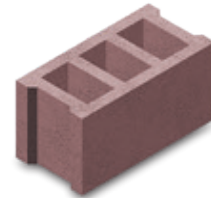
CBC-20s



CBC-s-20



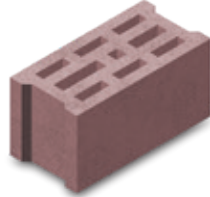
CBC-ins-20



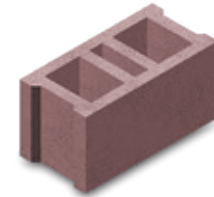
CBC-20-1-3



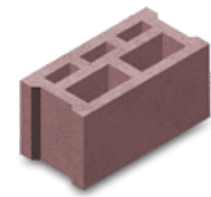
CBC-20-1-2



CBC-20-3-9



CBC-20-1-3a

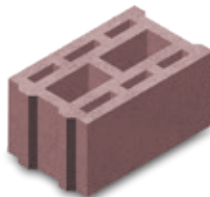


CBC-20-2-3

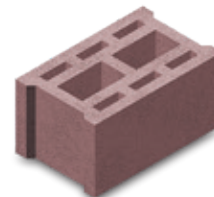
## 25x40x20 cm BLOCKS 800 / 2.800 / 6.000 / 8.000 / 16.000 pcs/8 hour



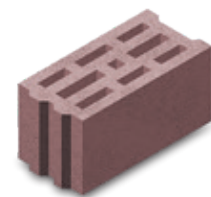
CBC-25s



CBC-25-3-8g



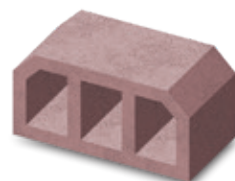
CBC-25-3-8



CBC-20-3-9g

## HOURLIES

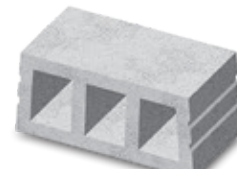
## HOURLY



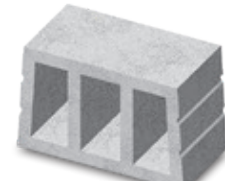
CBC-20-a



CBC-25-a



h18



h24

PROFESSIONAL TEAM  
HIGH EFFICIENCY  
LATEST TECHNOLOGY  
EQUIPMENTS

CONCRETE BLOCK,  
INTERLOCK,  
INSULATED BLOCKS,  
CURBSTONE AND  
SPECIAL BLOCK MACHINES  
AND FACTORY MANUFACTURING.



**BİRTANE MAKİNA**  
**NAK. BİLG. İNŞ. SAN. VE TİC. LTD. ŞTİ.**

Saray Mahallesi Keresteciler Sanayi Sitesi  
18. Sokak No: 12 Kazan-ANKARA/TURKEY  
**T. +90 312 815 25 00 | F. +90 312 815 25 02**

**E. cobmac@cobmac.com**

**www.cobmac.com**